

Large Capacity Dual Hose Reels

1275 Series

1275 Series "Dual Hose" hand crank or motorized hose reels are designed for large capacity applications. This series features dual plumbing with two swivel inlets and two low profile outlets that compliment the open drum slot and provide a non-crimping, flat smooth hose wrap. The industry preferred one piece all welded "A" frame design adds rigidity and strength while the positive gear drive rewind assures consistent trouble-free performance.

1275 SERIES Offers...

- ✓ Two Solid Brass BS Swivels & Two Outlet Risers For Dual Hose Applications
- ✓ One Piece All Welded Steel "A" Frame Construction
- ✓ Low Profile Riser & Open Drum Slot For Smooth, Even Hose Wraps
- ✓ Permanently Lub. Pillow Block Bearings Assure Smooth Rotation
- ✓ Swivel O-Ring Seals, Supported By Teflon® Spacers



MOTOR

MANUAL

SPRING

Drive Type

Manual

Motor

Media

Air

Water

Oil

Swivel material

Steel

Seal material

Nitrile

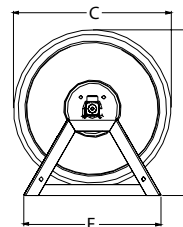
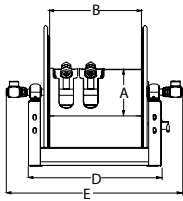
1275 HAND CRANK MODELS // Air & Water, oil & fuel

MODEL no hose	I.D.	O.D.	Length	I.D.*	O.D.*	Length*	BAR	Inlet	Outlet	KG	Size
1275-4-50	12mm	21mm	15 m	10mm	17mm	21 m	210	1/2"	1/2"	18	1
1275-4-100	12mm	21mm	30 m	10mm	17mm	42 m	210	1/2"	1/2"	19	2
1275-4-150	12mm	21mm	45 m	10mm	17mm	61 m	210	1/2"	1/2"	21	3
1275-4-200	12mm	21mm	61 m	10mm	17mm	91 m	210	1/2"	1/2"	25	4
1275-6-50	25mm	37mm	15 m	19mm	29mm	18 m	210	1"	1"	29	5
1275-6-75	25mm	37mm	23 m	19mm	29mm	33 m	210	1"	1"	31	6
1275-6-100	25mm	37mm	30 m	19mm	29mm	47 m	210	1"	1"	34	7
1275-6-150	25mm	37mm	45 m	19mm	29mm	61 m	210	1"	1"	40	8

MOTORS DRIVEN MODELS // Add the suffix to hand crank models above

Suffix #	Motor Type	Description	Extra KG
A	AIR #4 GAST	Comp. Air Motor	4
E	ELECTRIC - 12V DC	1/3 HP	6
EB	ELECTRIC - 24V DC	1/2 HP	12
ED	ELECTRIC Explosion Proof	1/2 HP	12
EA	ELECTRIC Explosion Proof - 115V DC	1/2 HP	12
H	HYDRAULIC	End Ported 9/16-18 UNF	3
C	CRANK	Bevel Gear	2

Also available in
STAINLESS STEEL
Please see page 20 & 21



DIMENSIONS

SIZE	A	B	C	D	Crank E	Elec E	Air E	F	G
1	159	203	445	340	490	543	495	385	476
2	159	305	445	441	592	644	597	385	476
3	159	457	445	594	745	797	750	385	476
4	159	610	445	746	897	950	900	385	476
5	267	343	508	484	-	770	720	480	273
6	267	343	610	484	-	770	720	518	664
7	267	508	610	650	-	785	885	518	664
8	267	508	711	650	-	785	885	573	764



Dual Hydraulic Hose Reels

MPD, TDMP & 1275HP Series

MPD, TDMP and 1275HP Series "Dual Hydraulic" hose reels have similar features to their related series, but have been redesigned to handle dual hydraulic applications. Choose between spring driven retraction, hand crank or motorized models.

MPD & TDMP SERIES Offers... 1275HP SERIES Offers...

- ✓ Dual Port Full Flow Swivel
- ✓ One-Sided Supply/Return Hookup
- ✓ Swivel Seals: TEFLON®
- ✓ Designed For Dual Hydraulic Emergency Rescue Systems And Other High Pressure Hydraulic Tools
- ✓ Two High Pressure Full Flow Melanized Steel 1/4" Swivel Inlets
- ✓ Low Profile Outlet Riser & Open Drum Slot Design
- ✓ Swivel Seals: VITON®



MOTOR

MANUAL

SPRING

Drive Type

- Spring
- Manual
- Motor

Media

- Oil

Swivel material

- Steel

Seal material

- Teflon/Viton

MPD SERIES // Spring Rewind

MODEL hose	MODEL no hose	I.D.	O.D.	Length	BAR	Inlet	Outlet	KG hose	KG no hose	Size
N/A	MPDL-N-150-BGX	6mm	12mm	15 m	210	1/4"	1/4"	-	28	1
MPD-N-330-BGX	MPDL-N-330-BGX	10mm	17mm	9 m	210	3/8"	3/8"	35	28	1
MPD-N-430-BGX	MPDL-N-430-BGX	12mm	21mm	9 m	175	1/2"	1/2"	36	28	1

Reels are furnished standard with dual-hydraulic hose banded together every 1m with power strip-type clamps. Maximum temperatures

TDMP SERIES // Spring Rewind

MODEL hose	MODEL no hose	I.D.	O.D.	Length	BAR	Inlet	Outlet	KG hose	KG no hose	Size
TDMP-N-350-BGX	TDMP-L-N-350-BGX	10mm	17mm	15 m	210	3/8"	3/8"	47	36	2
TDMP-N-450-BGX	TDMP-L-N-450-BGX	12mm	19mm	15 m	175	1/2"	1/2"	48	36	2

Reels are furnished standard with dual-hydraulic hose banded together every 1m with power strip-type clamps. Maximum temperatures 99° C

1275HP SERIES // Manual & Motor Rewind

MODEL no hose	Rewind Type	Capacity with 6mm hose	Capacity with 10mm hose	BAR	Inlet	KG no hose	Size
1275HPL-(X*)-8	Rim Rewind	41 m	26 m	700	1/4"	17	3
1275HPL-(X*)-8-C	Geared Bevel Crank	41 m	26 m	700	1/4"	20	4
1275HPL-(X*)-8-A	Air Motor	41 m	26 m	700	1/4"	23	5
1275HPL-(X*)-8-E	Electric Motor	41 m	26 m	700	1/4"	31	6
1275HPL-(X*)-12	Rim Rewind	61 m	38 m	700	1/4"	18	7
1275HPL-(X*)-12-C	Geared Bevel Crank	61 m	38 m	700	1/4"	20	8
1275HPL-(X*)-12-A	Air Motor	61 m	38 m	700	1/4"	24	9
1275HPL-(X*)-12-E	Electric Motor	61 m	38 m	700	1/4"	32	10

DIMENSIONS

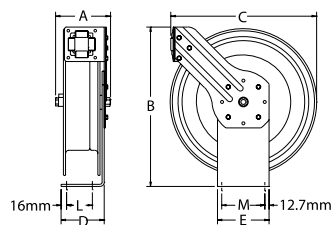
SIZE	A	B	C	D	E	L	M
1	298	533	498	152	152	102	127
2	273	648	584	203	229	178	203
3	460	467	432	-	-	-	-
4	460	467	432	-	-	-	-
5	460	521	432	-	-	-	-
6	460	568	432	-	-	-	-
7	460	578	432	-	-	-	-
8	460	578	432	-	-	-	-
9	460	622	432	-	-	-	-
10	460	670	432	-	-	-	-

1275HP OUTLET OPTIONS

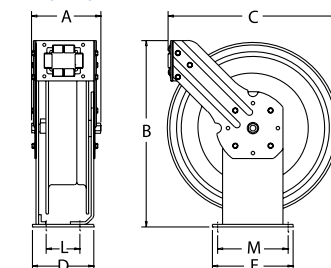
Replace (X*) in model number with one of the following;

- A = 4 JIC Male
- B = 5 JIC Male with 1.5" x 3/8" adapter
- C = 1/4" BSP Female
- D = M14 x 1.5 Female
- 4 = 1/2" NPT Female (standard - no adapter)

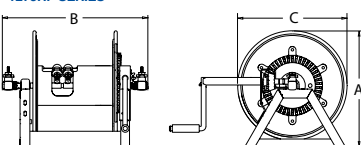
MPD SERIES



TDMP SERIES



1275HP SERIES



FOR MORE INFORMATION PLEASE CALL ☐

+44 (0) 1536 464 990 or visit www.crireels.com